



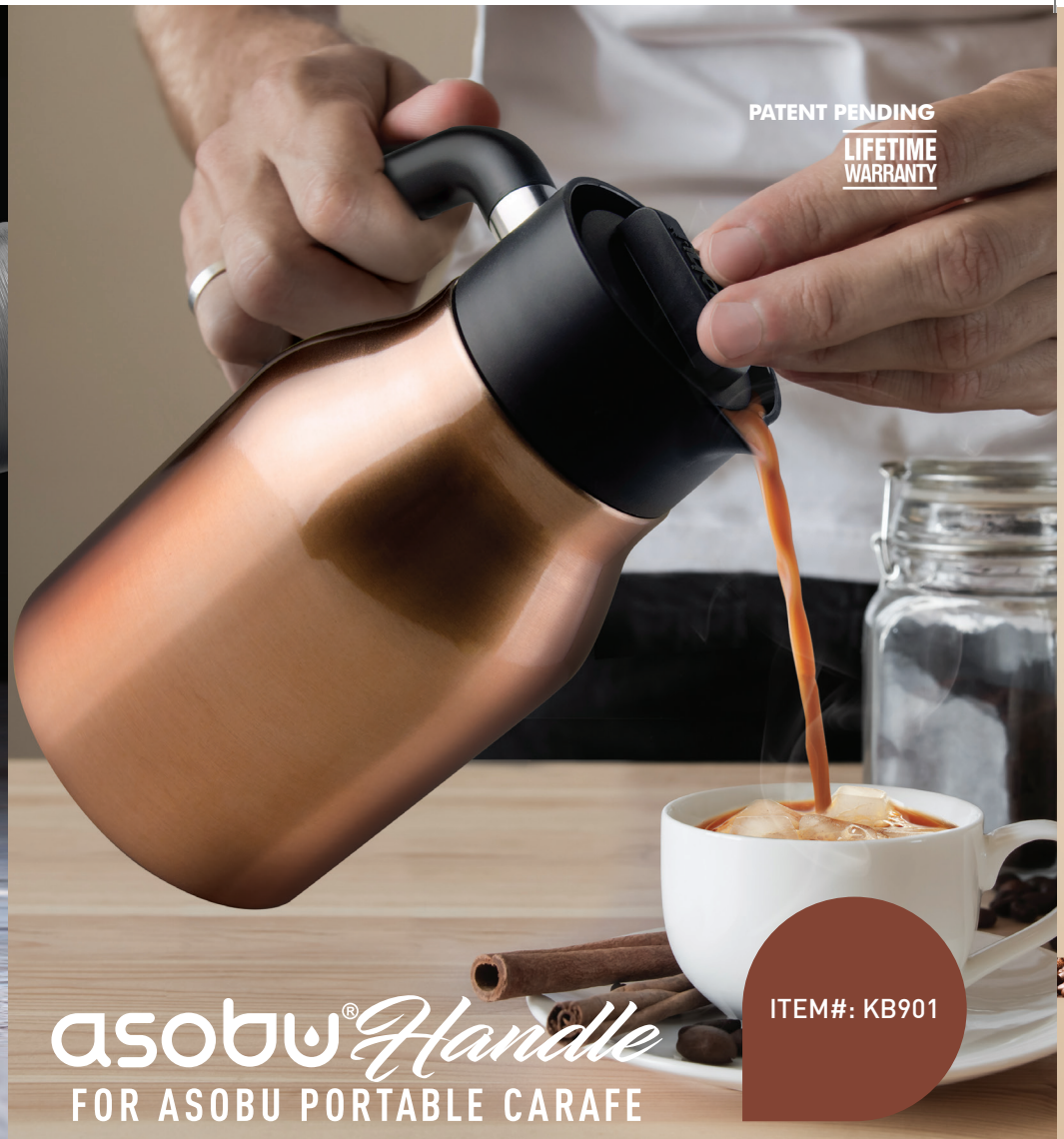
# 2020 ASOBU PRODUCTS

# asobu® COLDbrew

INSULATED PORTABLE BREWER



ITEM#: KB900  
40 OZ / 1L



PATENT PENDING  
LIFETIME WARRANTY

# asobu® Handle

FOR ASOBU PORTABLE CARAFE

ITEM#: KB901

## FEATURES :

- Copper Insulated Steel Brewing Carafe keeps your coffee concentrate cold up to 24 hrs.
- Clear TRITAN™ Brewing Carafe - durable and BPA Free, 100% leak proof lids
- Portable and lightweight, great to carry the carafe in car, to the office and even in the park.



KB900- SILVER/BLACK



KB901- SILVER/BLACK



KB900- COPPER/BLACK



KB901- COPPER/BLACK



KB900- BLACK/BLACK



KB901- BLACK/BLACK



KB900- WHITE/WHITE



COLOUR OPTIONS: ● ● ● ● ○



GIFT TUBE FOR KB900



GIFT BOX FOR KB901 COLD BREW + ASOBU HANDLE

PATENT PENDING

LIFETIME WARRANTY



ITEM#: PO300  
40 OZ / 1L

# asobu® Pourover

INSULATED COFFEE MAKER



# asobu® Handle

FOR ASOBU PORTABLE CARAFE

ITEM#: H1

### FEATURES :

- Brewer Made of Borosilicate Glass
- Double Wall Vacuum Insulated carafe
- Stainless Steel lid for portable carafe
- Dual Copper Lining
- Stays hot up to 12 hours
- 100% BPA free



PO300- SILVER/BLACK



8 42591 02926 4



PO300- BURGUNDY/BLACK



8 42591 02928 8



PO300- BLACK/BLACK



8 42591 02927 1



PO300- COPPER/BLACK



8 42591 02925 7

COLOR OPTIONS:



GIFT TUBE FOR PO300



GIFT BOX FOR PO301 POUROVER + ASOBU HANDLE

*Vacuum insulated mug with ceramic inner coating*



**asobu® Ultimate**  
VACUUM INSULATED COFFEE MUG

PATENT PENDING  
LIFETIME WARRANTY

ITEM#: SM30  
12 OZ / 360 ML



**THIS IS TRULY THE ULTIMATE COFFEE MUG!** The mug is made of double wall vacuum insulated copper lined 18/8 stainless steel, which keeps your coffee hot for hours when used with the adjustable proof lid. The ceramic inned coating of the mug makes it easy to clean and further insulates the mug. The ergonomic rounded handle makes it easy and safe to grip and carry. Ideal for home and office use. This product is 100% BPA free.

COLOUR OPTIONS:



GIFT BOX

**FEATURES :**

- Stainless Steel, Copper Lined, and Ceramic Construction
- Double Wall Vacuum Insulated
- Stays hot for hours
- Spillproof lid
- Hand Wash



SM30- WHITE



SM30- BLACK



SM30-BLUE



SM30- BURGUNDY



ITEM#: BF22  
13 OZ / 380 ML

LIFETIME  
WARRANTY

**FEATURES :**

- Copper, Vacuum Insulated
- Double-wall 18/8 stainless steel body
- Keeps beverage HOT for 12 hrs., COLD for 24 hrs.
- Flip-top spill proof lid
- Wide-mouth for easy filling and cleaning
- Textured body for good grip
- Concave groove on the sides for firmer grip

**CAFÉ COMPACT  
COFFEE CUP**

**FEATURES :**

- Stainless Steel Construction
- Double Wall, Vacuum Insulated
- Keeps beverage hot for hours
- Detachable slide-lock lid
- 100% BPA free

ITEM#: VIC4  
10 OZ / 300 ML

**asobu® Imperial Coffee**  
VACUUM INSULATED COFFEE TUMBLER



BF22- WHITE



8 42591 03527 2



BF22- BLACK



8 42591 03526 5

Flip Top  
spill proof lid



GIFT BOX



MARBLE



8 42591 03676 7



FLORAL



8 42591 03675 0



BLACK



8 42591 03697 2



WHITE



8 42591 03698 9



GIFT TUBE

**PATENT PENDING**  
**LIFETIME**  
**WARRANTY**

**PATENTED**  
**LIFETIME**  
**WARRANTY**



**ITEM#: LB17**  
17 OZ / 500 ML

**asobu®** *Le Baton*  
VACUUM INSULATED TRAVEL BOTTLE

COLOUR OPTIONS: ● ● ● ●

**FEATURES :**

- Copper vacuum insulated, HOT up to 12 hrs., COLD up to 24 hrs.,
- Durable 18/8 stainless steel body with easy grip rubberized texture
- Wide mouth for adding ice cubes and easy cleaning
- Slim and lightweight for easy carrying
- 100% leak proof and BPA Free



GIFT BOX

PATENT PENDING

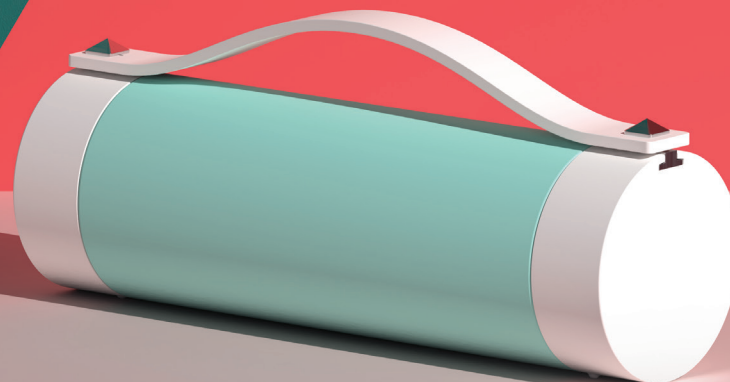
LIFETIME  
WARRANTY

ITEM#: LA16

14 OZ / 410 ML

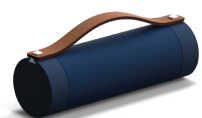
# asobu® *Clutch n Go*

VACUUM INSULATED WATER BOTTLE

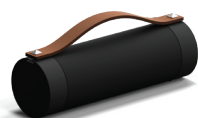


## THE ASOBU® CLUTCH N GO IS DEFINITELY A WATER BOTTLE THAT MAKES A FASHION STATEMENT AND THEN SOME!

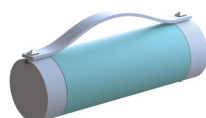
Made of double wall vacuum insulated copper lined stainless steel, it will keep your favourite beverages hot up to 12 hours and cold up to 24 hours. This product has two unique features. The first is a secret compartment on one side to store some personal articles, such as a ring, keys, and so on securely. The second is the handy leather side handle that one can slip their hand under for a secure grip when carrying the bottle. The lids on both sides are easily removed for easy access to your favourite beverage or the storage compartment.



LA16- BLUE



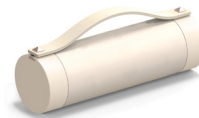
LA16- BLACK



LA16- TURQUOISE



LA16- FLORAL



LA16- WHITE



GIFT TUBE



"DIVA" CUP  
VACUUM BEVERAGE CONTAINER



INSULATED BEVERAGE CONTAINER  
LOCKING LID PROTECTION  
MAKE A FASHION STATEMENT  
VACUUM INSULATED **DOUBLE WALLS**  
STAYS HOT OR COLD FOR HOURS  
PERFECT FOR THE OFFICE OR ON THE GO.  
IDEAL FOR GYM OR IN THE CAR  
OPENS SOFTLY

DISHWASHER PROOF  
100% BPA FREE



ITEM#: V600  
15(OZ) / 450(ML)



GIFT BOX



8



EASY GRIP TEXTURED EXTERIOR FINISH

ITEM#: V800  
13(OZ) / 390(ML)

FEATURES

- 18/8 stainless steel construction
- Vacuum insulation technology
- Push button flow
- Leak proof easy screw lid
- Matte exterior finish
- Easy match color options
- Cool-off rim avoids direct contact of hot beverage with lips

HOT for 12 hours, COLD for up to 24 hours!



5<sup>TH</sup> AVENUE  
COFFEE TUMBLER



BLACK



BROWN



SILVER

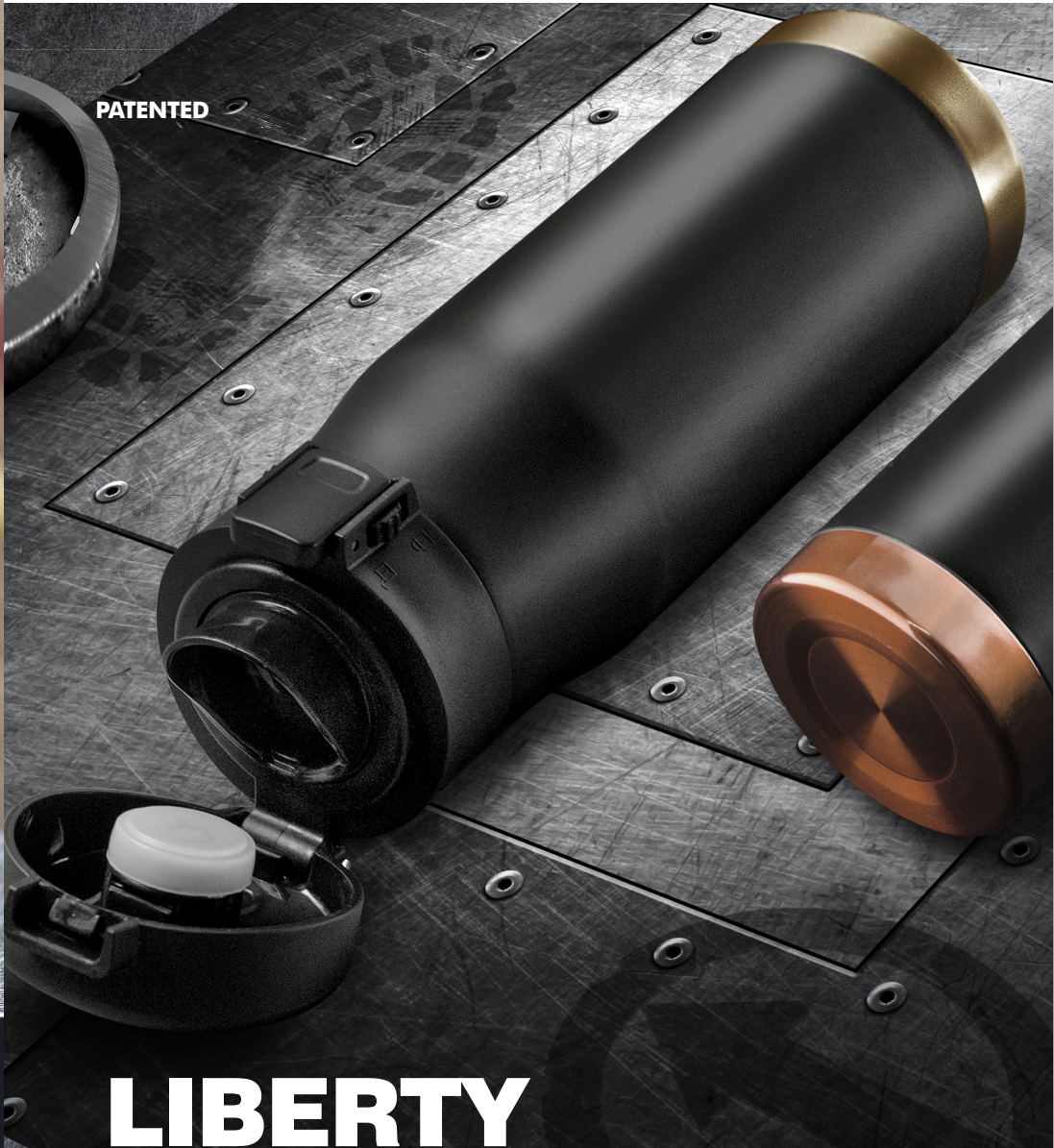


WHITE



GIFT BOX





# LIBERTY CANTEEN

All boundaries are broken with this incredible travel mug! The Liberty Canteen has no limits. It boasts all the latest features and style. The striking matte finish and distinctive design makes this canteen the most sought after drinkware product on the market! Virtually indestructible the Liberty Canteen will stand up to the most rigorous use.

Double wall, vacuum insulated technology keeps your drink cold for up to 24 hours and piping hot for up to 12 hours! The easy access durable flip top lid maintains spill proof protection. Fill up the Liberty Canteen and experience the independence of the ultimate on the go canteen.

Holds 17 oz / 500 ml and comes with a Lifetime Warranty it is the most sort after canteen on the market!



ITEM#: LC17  
17(OZ) / 500(ML)



SILVER



8 42591 02176 3



COPPER



8 42591 02174 9



NICKEL



8 42591 02177 0



GOLD



8 42591 02175 6



GIFT TUBE

# SKINNY MINI WATER BOTTLE

**"SKINNY MINI" IS THE ONLY FASHION CHIC ACCESSORY YOU NEED!**

It fits in your back pocket, your purse. It is easy to grip and comes with built in carry strap. It holds 10 oz of your favourite beverage. Will stay cool for up to 12 hours, hot for 6 hours!

ITEM#: SBV20  
8OZ/ 230ML



**FEATURE**

- 8oz/230ml capacity
- Vacuum insulated / dual copper plated insulation
- Double wall stainless steel
- Easy grip lid, built in carry strap
- Compact / easy to carry
- Stays cold up to 12 hours, hot up to 6 hours
- 100% BPA free
- Dishwasher proof

1 □



WHITE



PINK



TEAL



BLACK



GIFT BOX

PATENT PENDING



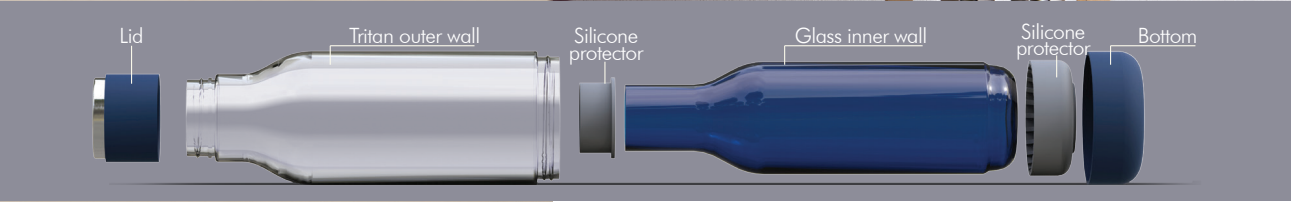
*Drinking from a glass bottle have you worried about it breaking? Not anymore!*



ITEM#: GT50  
17OZ/500ML

# asobu® Inner Peace

GLASS WATER BOTTLE



Want to drink from a glass bottle but you're afraid it will break? The Asobu® Inner Peace Glass Bottle is the answer. The bottle is made of double wall insulating materials. The outer wall is made of temperature resistant, shock proof Tritan™, while the inner wall and spout are made of glass. The inner glass liner is protected by two cushioned sections made of soft silicone. This completely protects the inner glass liner from severe shock and breakage. The outer Tritan™ wall adds additional protection.

COLOUR OPTIONS: ● ● ● ●

### FEATURES

- Double Wall Insulated
- 100% BPA free
- Does not form condensation on the outside in hot weather
- Hand Wash



BURGUNDY



BLACK



CLEAR



BLUE



GIFT BOX

PATENT PENDING



*Fashion Statement*



**asobu® Orb**  
VACUUM INSULATED WATER BOTTLE



ITEM#: SBV30  
14OZ/420ML

COLOUR OPTIONS: 

The Asobu® Orb Bottle is made of double wall, vacuum insulated copper lined 18/8 stainless steel, so it will keep your drink hot for up to 12 hours and cold up to 24 hours. The ergonomic easy grip shape makes it an ideal travel companion. The stunning look of this eclectic bottle sets you apart from the crowd of standard “so what looking” insulated bottles on the market today. It fits a large capacity of 420 ml /14 ounces of your favourite beverage. The Orb Bottle comes with a soft touch exterior and the lid can be used as a handy cup for serving a small portion when preferred. This product is 100% BPA free. Make a unique fashion statement today and the next time you are out and about during your busy day or evening with the Orb Bottle.

**FEATURE**

- Stainless Steel Construction
- Double Wall Vacuum Insulated.
- Stays hot up to 12 hours, cold up to 24 hours
- 100% BPA free
- Easy screw top wide mouth lid
- Dishwasher Safe



BLUE



SILVER



BLACK



WHITE

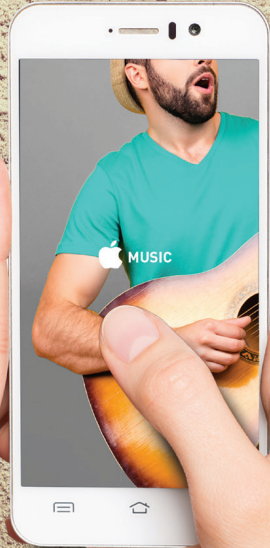


YELLOW



GIFT BOX

NEW!  
PATENT PENDING



ITEM#: BT60  
17OZ/500ML

**asobu® Wireless**  
VACUUM INSULATED WATER BOTTLE



COLOUR OPTIONS:

Enjoy your favourite music while you are enjoying outdoor activities

No need for a big "boom box" or loud speakers connected to cords, the wireless BEAT Bottle is ideal for the beach, picnics and poolside and can even be your musical companion at work or study.

The bottle has a double wall, vacuum insulated copper lined 18/8 stainless steel body. The bottle styled body has the speaker on the top of the bottle instead of underneath. This helps make the speaker sound better and removes the risk of getting the speaker wet. It also gives you easy access to the speaker, permitting you to power on and off, change the playlist, and skip or repeat the last song. The wireless feature sets up easily to your cell phone and recharges rapidly in approximately 1 hour with the capability of running for hours after charging.

**FEATURES**

- Stainless Steel Construction
- Double Wall Vacuum Insulated
- Stays hot up to 12 hours, cold up to 24 hours
- Easy screw top wide mouth lid
- Use wireless up to 25 feet away
- Hand wash bottle. Keep lid away from liquids. Wipe clean.
- Microphone and Speaker



WHITE



BLACK



BURGUNDY



TEAL



GIFT BOX

PATENT PENDING

*Flexible, bendable  
Silicone Straw*



ITEM#: ICT200  
20OZ/600ML

**asobu** *Superb Sippy*  
VACUUM INSULATED TUMBLER

COLOUR OPTIONS:

This is not just another plastic Sippy Cup. This is the one of a kind, Superb Sippy Cup with a Flexible, Bendable, Re-suable Silicone Straw! The inner body straw is made of robust Tritan™ to ensure it performs continuously and effectively day after day! The 20 oz/ 600 ML capacity stays cold for up to 24 hours because it is made of copper lined, double wall Vacuum insulated 18/8 stainless steel. It is ideal for everyday use at home, school, or office.

**FEATURES**

- Stainless Steel Construction
- Double Wall Vacuum Insulated.
- Stays hot up to 12 hours, cold up to 24 hours
- 100% BPA free



WHITE



8 42591 03667 5



BLACK



8 42591 03664 4



ORANGE



8 42591 03665 1



TURQUOISE



8 42591 03666 8



GIFT BOX

PATENT PENDING

LIFETIME WARRANTY

ITEM#: SBV24  
16 OZ / 460 ML

asobu® Urban  
VACUUM INSULATED WATER BOTTLE



COLOUR OPTIONS: 



SBV24 - FLORAL



SBV24 - MARBLE



SBV24 - BLACK



SBV24 - LIME



SBV24 - PEACH



SBV24 - TURQUOISE



SBV24 - WHITE



GIFT TUBE 1 5

# MINI HIKER

## WATER BOTTLE

ITEM#: TMF3

12(OZ) / 355 (ML)



### FEATURE

- Stainless Steel Construction
- Double Wall Vacuum Insulated
- Stays hot up to 12 hours, cold up to 24 hours
- 100% BPA free
- Easy screw top wide mouth lid with hang tag carry feature
- Anti slip, scratch resistant exterior
- Dishwasher Safe

BLACK



8 42591 02890 8

LIME



8 42591 02891 5

RED



8 42591 02892 2

TURQUOISE



8 42591 02893 9

WHITE



8 42591 02894 6



GIFT TUBE





**ITEM#: V606**  
7OZ / 200ML

**MINI DIVA IS THE ONLY FASHION CHIC ACCESSORY YOU NEED!**

It fits in your back pocket, your purse or your briefcase. It's easy to grip and can be opened or closed with one hand. This 7 oz. Fashion statement and eye catcher will hold your favourite beverage cool for up to 24 hours and hot for 12 hours!

**FEATURE**

- 7oz/200ml capacity
- Vacuum insulated / dual copper plated insulation
- Double wall 18/8 stainless steel
- soft Push button
- Compact / easy to carry
- 100% BPA free
- Dishwasher proof

**MINI DIVA TRAVEL BOTTLE**



GIFT TUBE



ITEM#: V605  
7(OZ) / 200(ML)

# PEEK-A-BOO

## KIDS BOTTLE

PEEK-A-BOO is a line of fun, colorful, and vacuum insulated bottle for kids with cute cartoons.

PEEK-A-BOO has a 7oz / 200ml capacity. It is double wall stainless steel which keeps beverage cold for up to 24 hours and hot for 12 hours!

The size is practical for kids to carry. It is lightweight and fits perfectly in lunch boxes and school bags.

18 PEEK-A-BOO has a leak proof lid and easy grip texture, which makes it a practical travel companion.



V605-LIGHT GREEN



V605-PINK



V605-TURQUOISE



GIFT BOX

PATENT PENDING



ITEM#: CY2GO  
13(OZ) / 386(ML)



# CHILL YO 2 GO

## ON THE GO SNACKS NEVER LOOKED SO COOL!

This creative addition to the Yo 2 Go line has a built in double wall of freezable honeycomb non toxic gel. This innovative gel freezes in only one hour, in the contents of the Chill Yo 2 Go remaining chilled for hours, even on a hot sunny day!

Fruit, nuts, cereal and other toppings stay fresh, while your yogurt, frozen yogurt and even ice cream will remain chilled for hours!

Make a smoothie, relax, enjoy your creative snack in the Chill Yo 2 Go. It is ready when you are! It is the ultimate addition to your on the go lunch. Available in a wide variety of trendy colours, this go to product comes with a sturdy melamine spoon and matching silicone grip band.

The Chill Yo 2 Go is the perfect solution to adding a healthy bite to your day. At school, work or play it is a must for all ages!



NEW!  
PATENT PENDING



SAY NO  
TO PLASTIC  
STRAWS!



Every purchase of our re-cyclable straws helps clean our oceans. Asobu® donates 10% of certain product sales toward saving our aquatic life. Buy re-cyclable straws and save an ocean turtle. We contribute 10% of profit to world oceanic preservation every time you purchase our re-cyclable straws. Oceanic sea life has a friend in Asobu®'s donations from sales. Purchase from Asobu® and help our worldwide waterways to stay clean.



ITEM#: PS/2

## asobu® *Re-usable straws*

ECO FRIENDLY RE-USABLE STRAWS

Don't you think it is time to say goodbye to throw away plastic straws? They harm the environment and kill aquatic sealife.

Be part of the solution, by using our Asobu® Eco Friendly Re-Usable Straws! Made of recyclable stainless steel these straws are equipped with a bendable silicone section giving you 360° degree access to your favourite beverage. The straws and flexible silicone sections tuck neatly into a convenient silicone carry holder. The attached strap makes it convenient to attach it where you need it. Why not replace your throw away straws with the Eco Friendly Re-Usable Straws today!

### FEATURES

- Recyclable Steel Straws
- Bendable Silicone middle sections
- Silicone carry holder
- Holder strap for convenience
- Hand Wash
- We will donate 10% of the profits to the WWF®



BLUE / PINK



PURPLE / YELLOW



MINT / CORAL



RED / BLACK

MODERN, PRACTICAL AND ECO FRIENDLY...THAT'S OUR MESSAGE!

ITEM#: SBV17  
17(OZ) / 510(ML)

# CENTRAL PARK WATER BOTTLE

The Central Park is one of the most innovative travel bottles on the market today! This fashion forward bottle's sleek design and large capacity makes it a must for work, travel and school. The robust 18/8 stainless steel structure is virtually indestructible! This Vacuum sealed double wall bottle will remain hot for up to 12 hours and cool for 24 hours! The easy access spill proof lid and stunning matte finish create a product that embraces fashion and functionality. 100% BPA free this eco friend product is a must for all ages. Make heads turn with this eye-catching travel bottle, a walk in the park never felt so good.....

We are now introducing the new "tone on tone" fashion look. This exciting design takes your bottle to a whole new level as a fashion accessory!



BLACK / BLACK



BLACK/SILVER



BLACK/COPPER



SILVER



WHITE / SILVER



GIFT TUBE

# CO-BRAND WITH US!



KB900 WITH HANDLE-PRINT (TONE ON TONE)



SBV24-LASER ETCH (TONE ON TONE)



VACUUM INSULATED | asobu®  
16oz/460ml • 18/8 Stainless



L : LB17-PRINT, R : SBV17 - TONE ON TONE



LB17-TONE ON TONE

asobu®